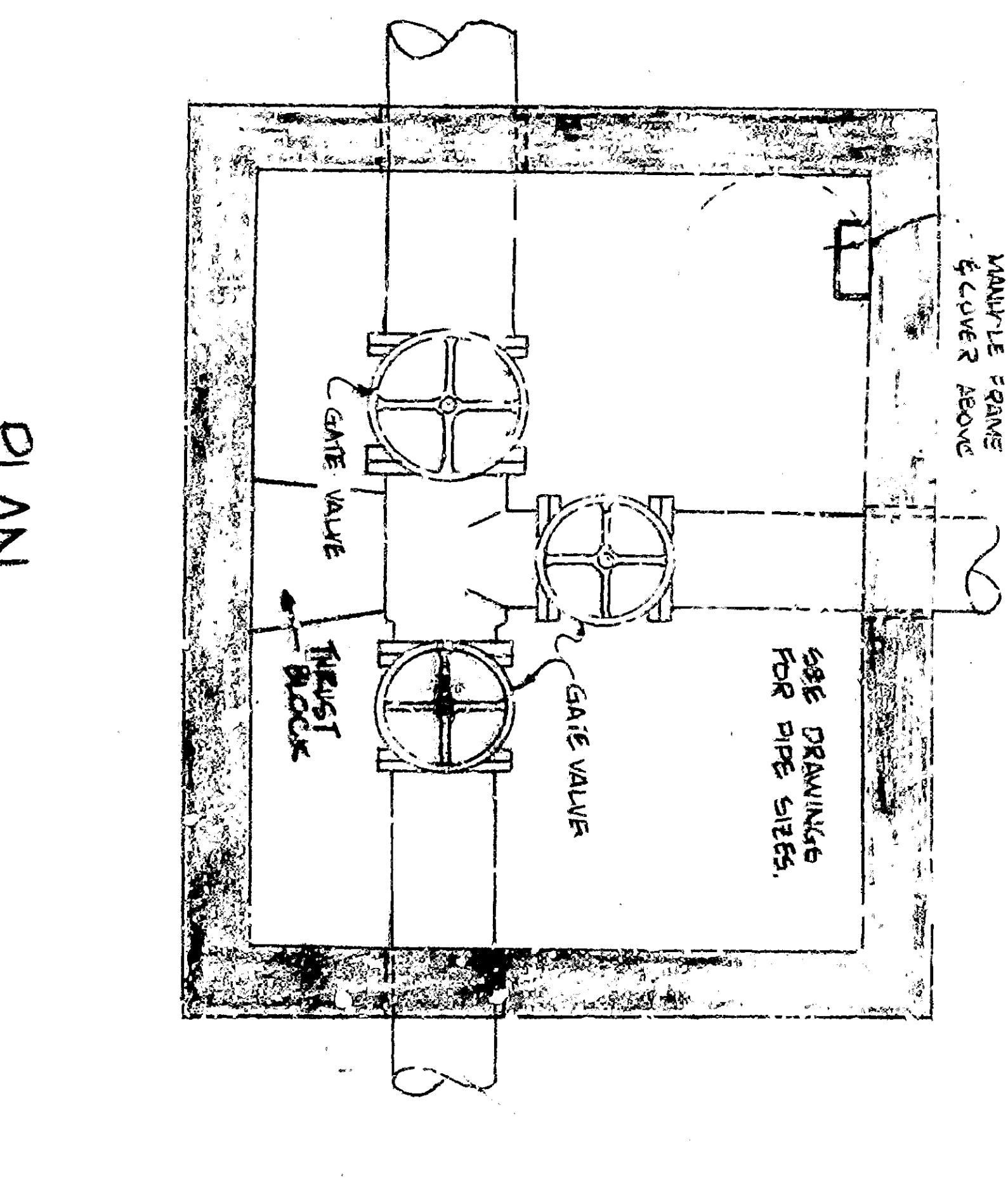
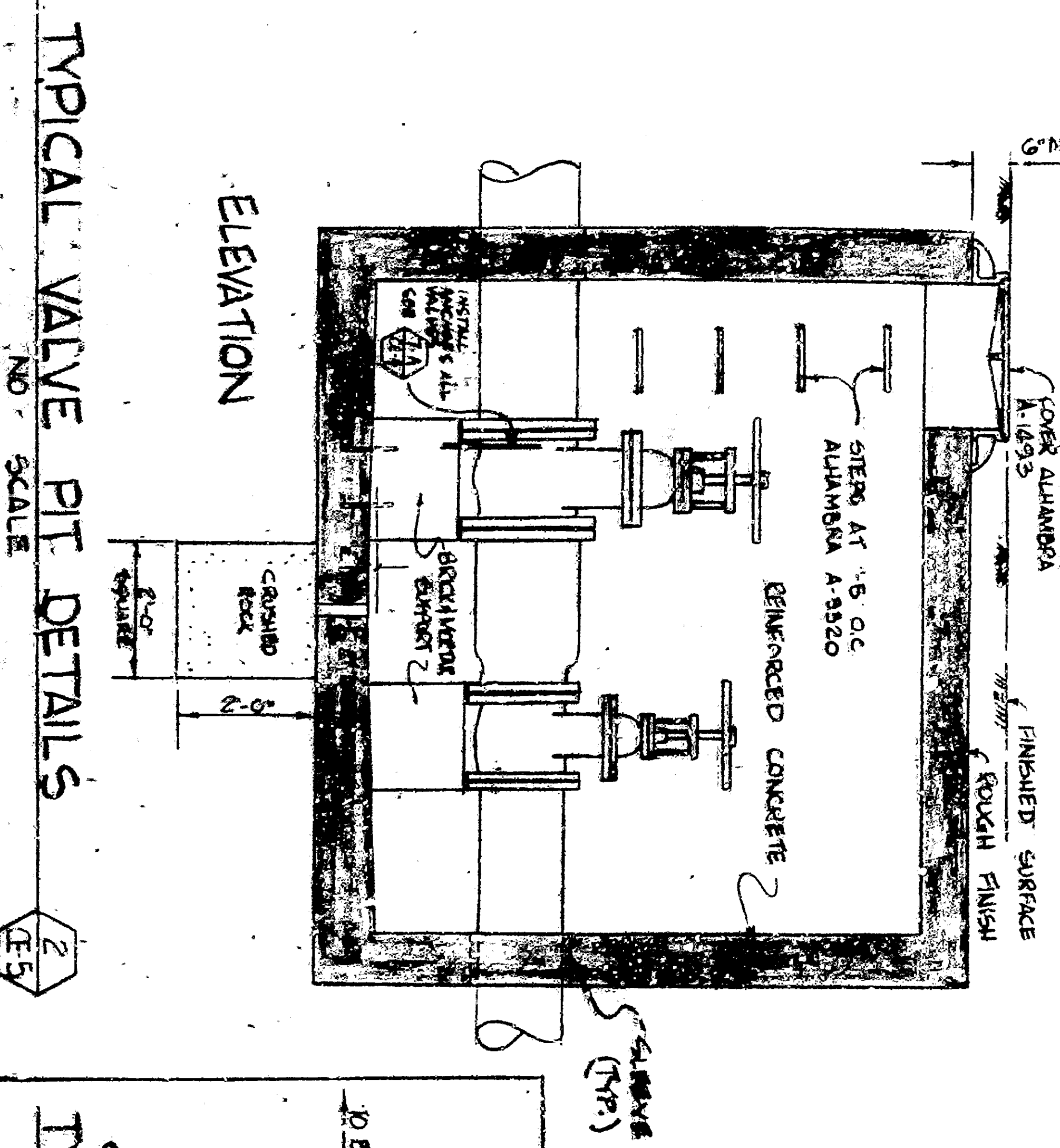
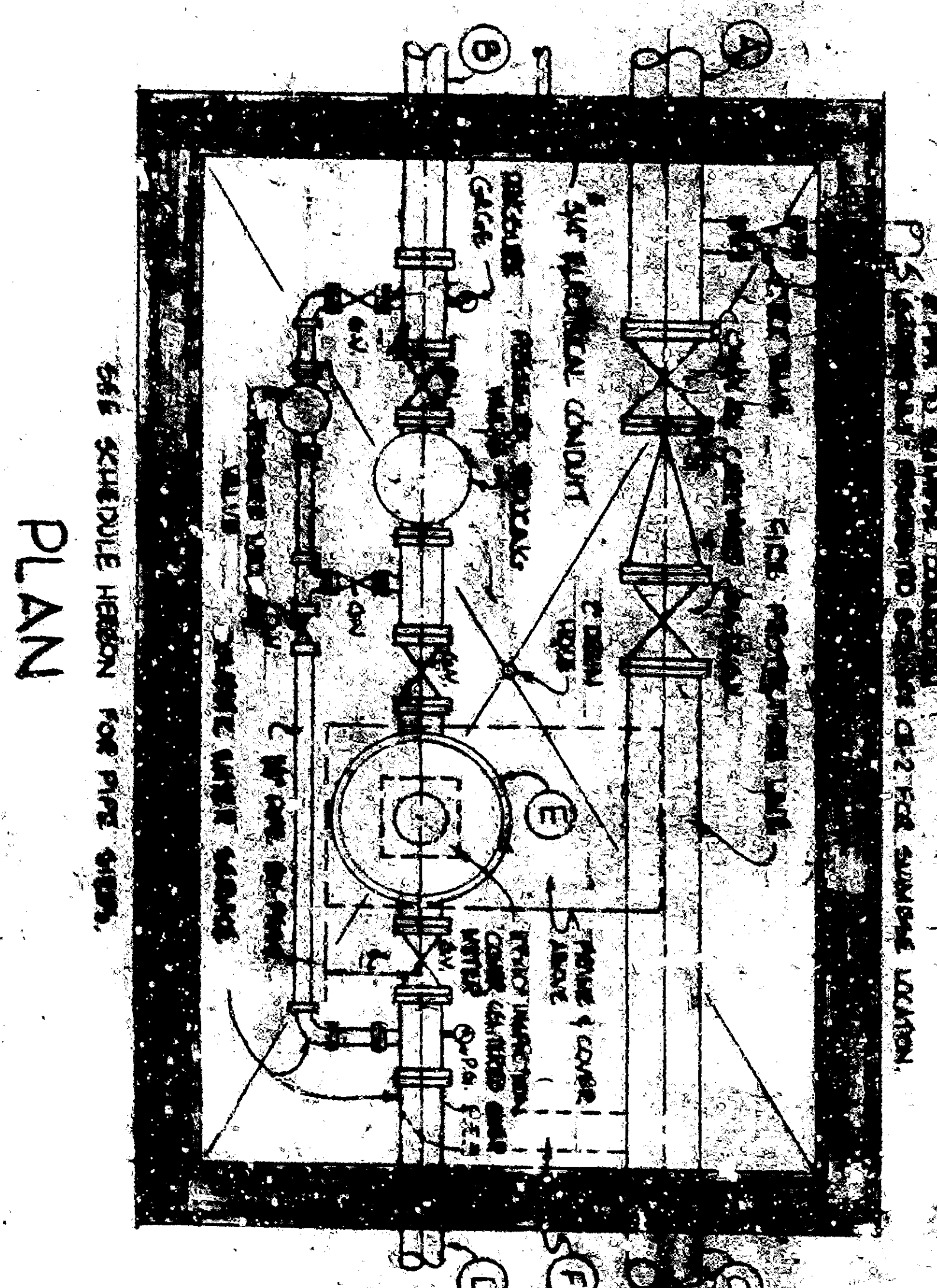
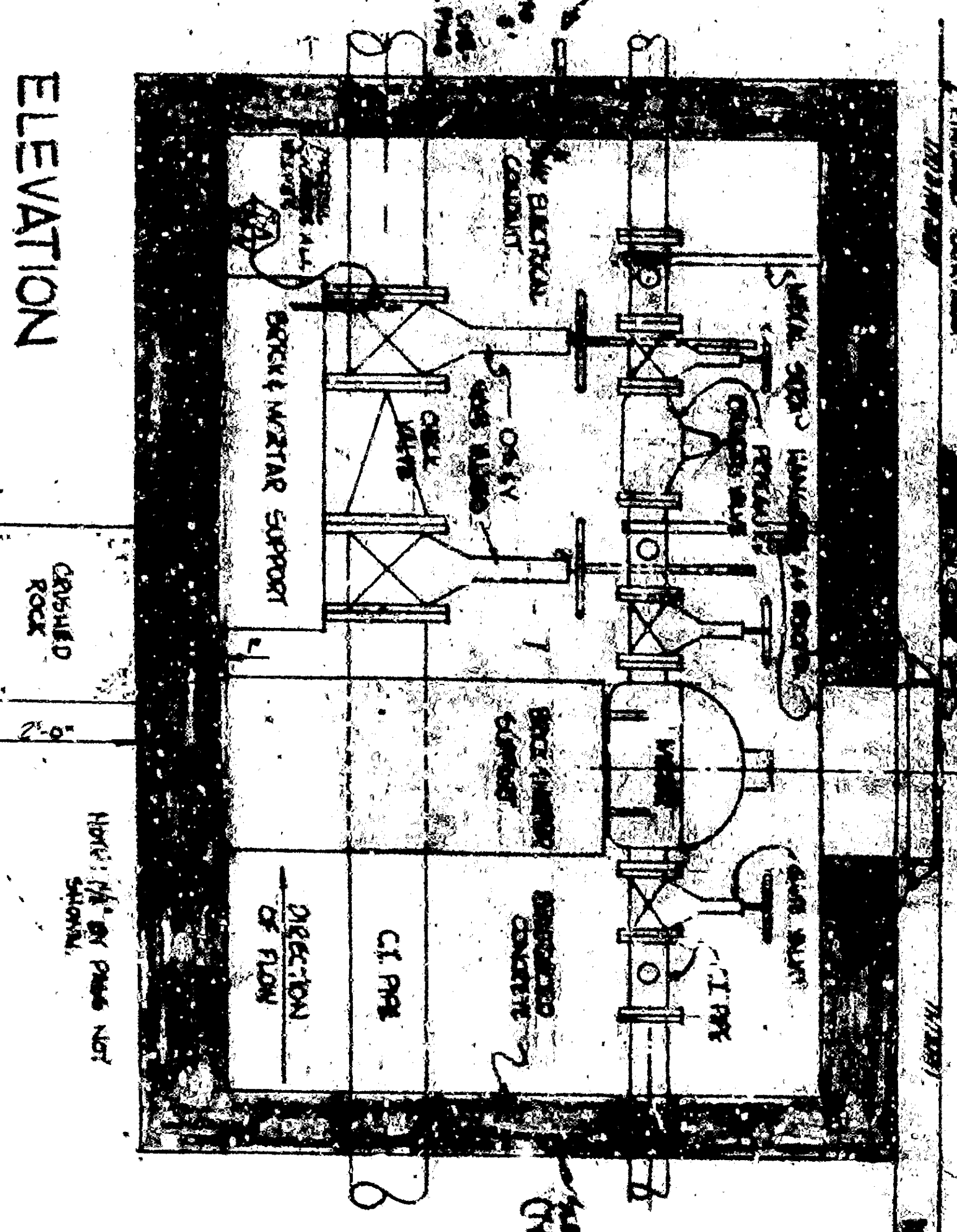
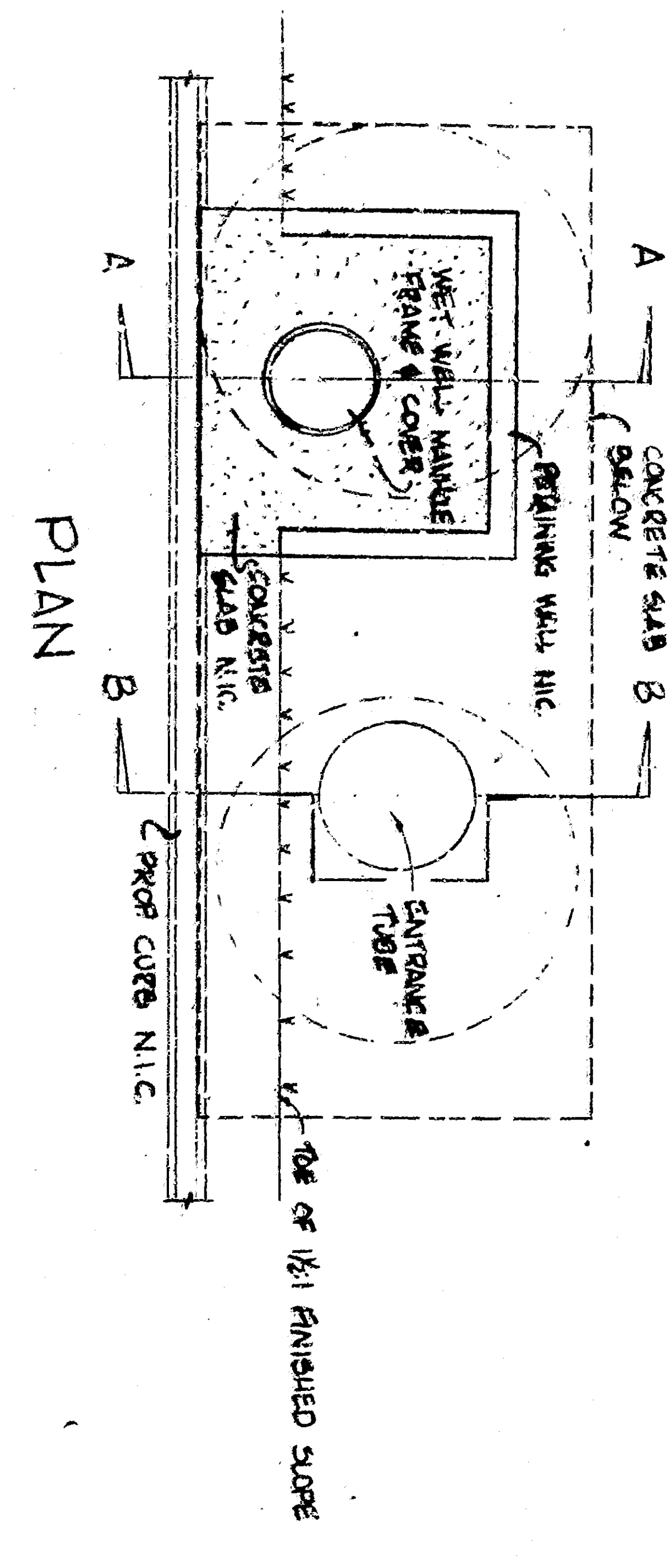
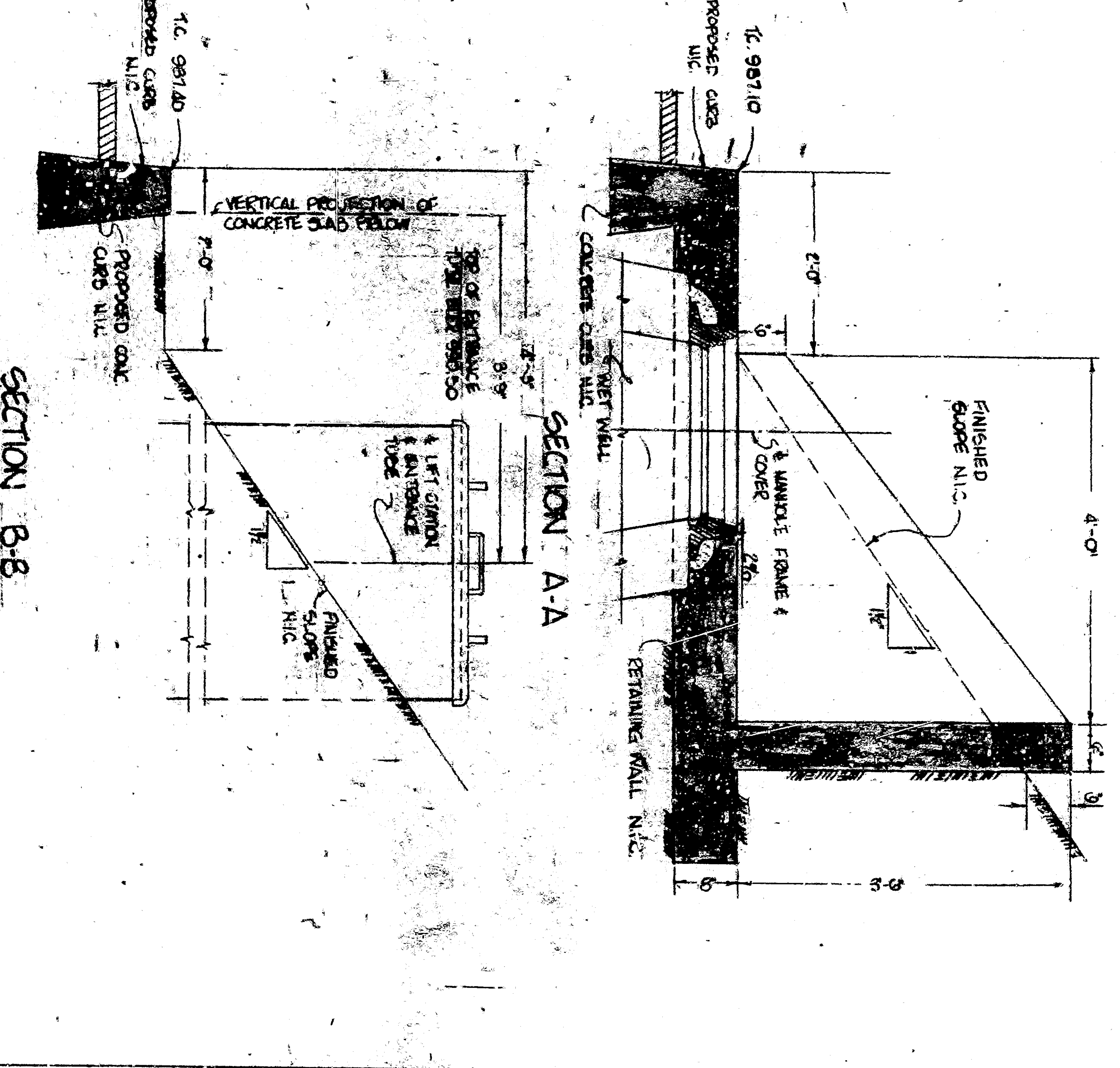


SLAB PLAN  
SANITARY SEWER LIFT STATION  
NO SCALE

**SIZING SCHEDULE**

SIZE	1	2	3	4	5	6	7	8	9	10	11	12	13	14	15
WET WELL DIA.	36"	42"	48"	54"	60"	66"	72"	78"	84"	90"	96"	102"	108"	114"	120"
WET WELL HGT.	4'-0"	4'-6"	5'-0"	5'-6"	6'-0"	6'-6"	7'-0"	7'-6"	8'-0"	8'-6"	9'-0"	9'-6"	10'-0"	10'-6"	11'-0"
WET WELL VOL.	1.0	1.5	2.0	2.7	3.5	4.3	5.1	6.0	6.9	7.9	8.8	9.8	10.8	11.8	12.9
WET WELL CAP.	36"	42"	48"	54"	60"	66"	72"	78"	84"	90"	96"	102"	108"	114"	120"
WET WELL INLET	12"	15"	18"	21"	24"	27"	30"	33"	36"	39"	42"	45"	48"	51"	54"
WET WELL OUTLET	12"	15"	18"	21"	24"	27"	30"	33"	36"	39"	42"	45"	48"	51"	54"
WET WELL INLET	12"	15"	18"	21"	24"	27"	30"	33"	36"	39"	42"	45"	48"	51"	54"
WET WELL OUTLET	12"	15"	18"	21"	24"	27"	30"	33"	36"	39"	42"	45"	48"	51"	54"
WET WELL INLET	12"	15"	18"	21"	24"	27"	30"	33"	36"	39"	42"	45"	48"	51"	54"
WET WELL OUTLET	12"	15"	18"	21"	24"	27"	30"	33"	36"	39"	42"	45"	48"	51"	54"



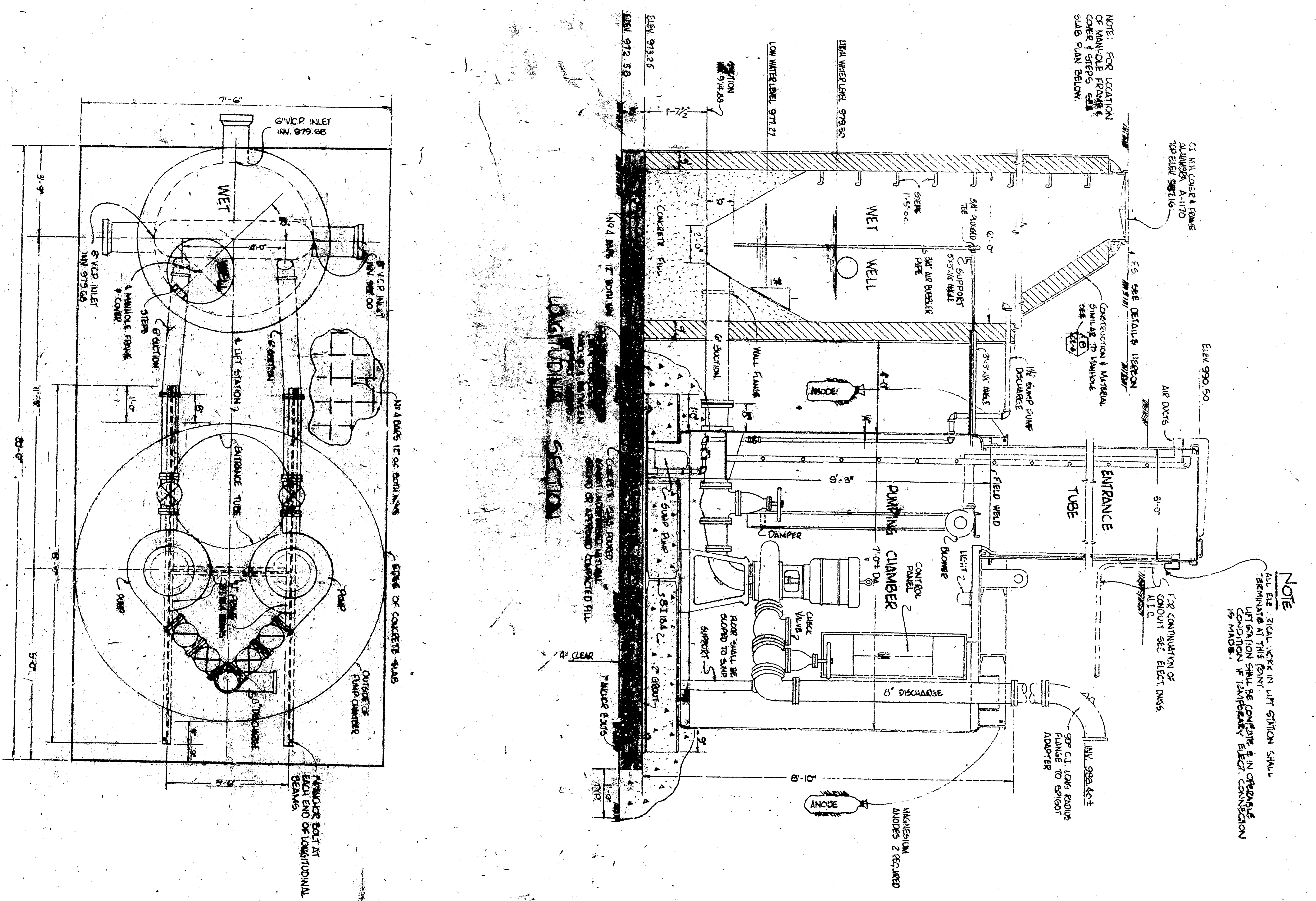
**NOTES:**

1. ALL VALVE PITS SHALL BE CONCRETE.
2. ALL VALVE PITS SHALL BE REINFORCED CONCRETE.
3. ALL VALVE PITS SHALL BE FINISHED WITH A 1/2" THICK CONCRETE SLAB ON TOP.
4. ALL VALVE PITS SHALL BE FINISHED WITH A 1/2" THICK CONCRETE SLAB ON THE SIDES.
5. ALL VALVE PITS SHALL BE FINISHED WITH A 1/2" THICK CONCRETE SLAB ON THE BOTTOM.
6. ALL VALVE PITS SHALL BE FINISHED WITH A 1/2" THICK CONCRETE SLAB ON THE TOP AND SIDES.
7. ALL VALVE PITS SHALL BE FINISHED WITH A 1/2" THICK CONCRETE SLAB ON THE TOP AND SIDES.
8. ALL VALVE PITS SHALL BE FINISHED WITH A 1/2" THICK CONCRETE SLAB ON THE TOP AND SIDES.
9. ALL VALVE PITS SHALL BE FINISHED WITH A 1/2" THICK CONCRETE SLAB ON THE TOP AND SIDES.
10. ALL VALVE PITS SHALL BE FINISHED WITH A 1/2" THICK CONCRETE SLAB ON THE TOP AND SIDES.

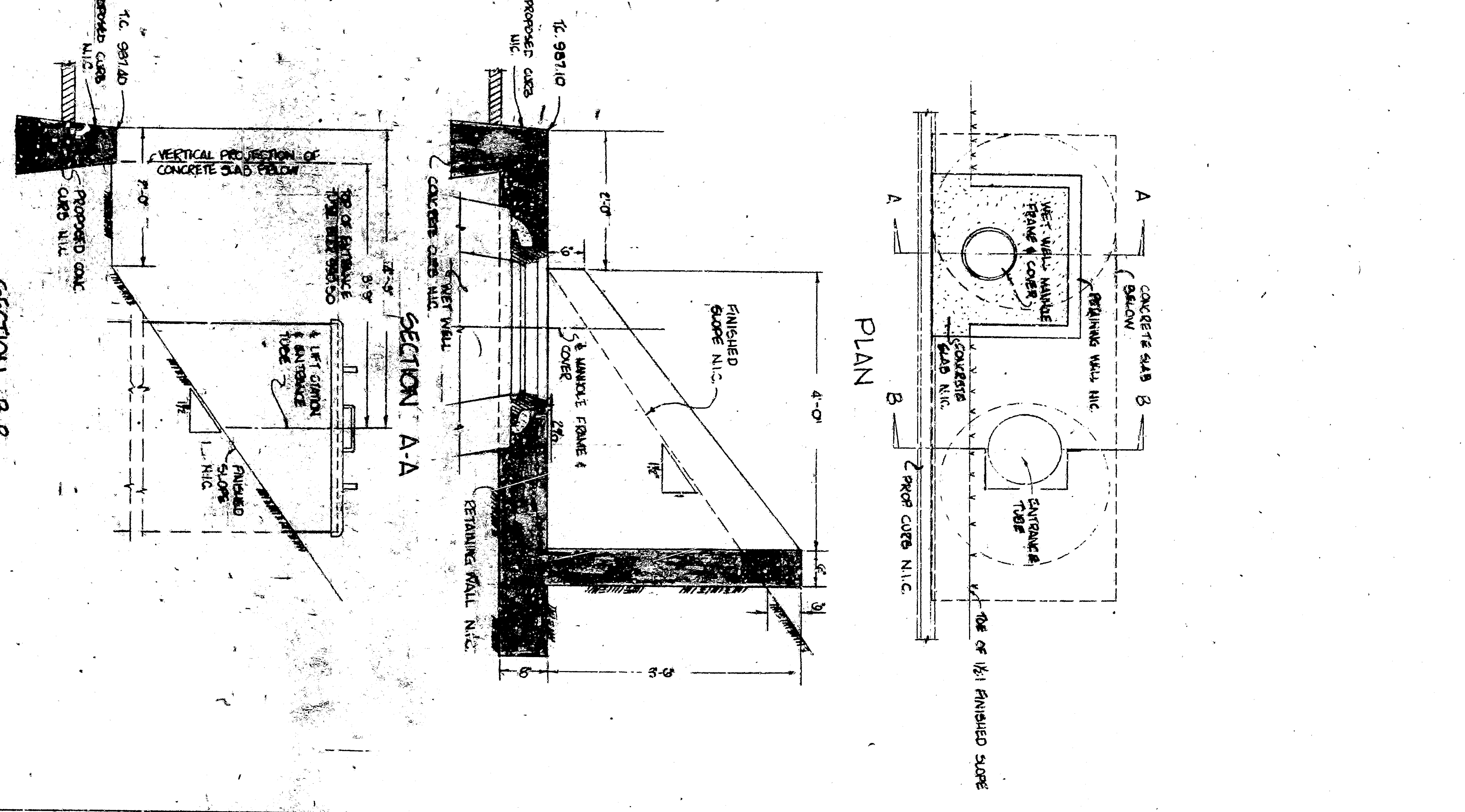
**NOTES:**

1. ALL VALVE PITS SHALL BE CONCRETE.
2. ALL VALVE PITS SHALL BE REINFORCED CONCRETE.
3. ALL VALVE PITS SHALL BE FINISHED WITH A 1/2" THICK CONCRETE SLAB ON TOP.
4. ALL VALVE PITS SHALL BE FINISHED WITH A 1/2" THICK CONCRETE SLAB ON THE SIDES.
5. ALL VALVE PITS SHALL BE FINISHED WITH A 1/2" THICK CONCRETE SLAB ON THE BOTTOM.
6. ALL VALVE PITS SHALL BE FINISHED WITH A 1/2" THICK CONCRETE SLAB ON THE TOP AND SIDES.
7. ALL VALVE PITS SHALL BE FINISHED WITH A 1/2" THICK CONCRETE SLAB ON THE TOP AND SIDES.
8. ALL VALVE PITS SHALL BE FINISHED WITH A 1/2" THICK CONCRETE SLAB ON THE TOP AND SIDES.
9. ALL VALVE PITS SHALL BE FINISHED WITH A 1/2" THICK CONCRETE SLAB ON THE TOP AND SIDES.
10. ALL VALVE PITS SHALL BE FINISHED WITH A 1/2" THICK CONCRETE SLAB ON THE TOP AND SIDES.

NO.	REVISION	DATE
1	ISSUED FOR BIDDING	
2	REVISED CONTRACT	
3	REVISED CONTRACT	
4	REVISED CONTRACT	
5	REVISED CONTRACT	
6	REVISED CONTRACT	
7	REVISED CONTRACT	
8	REVISED CONTRACT	
9	REVISED CONTRACT	
10	REVISED CONTRACT	

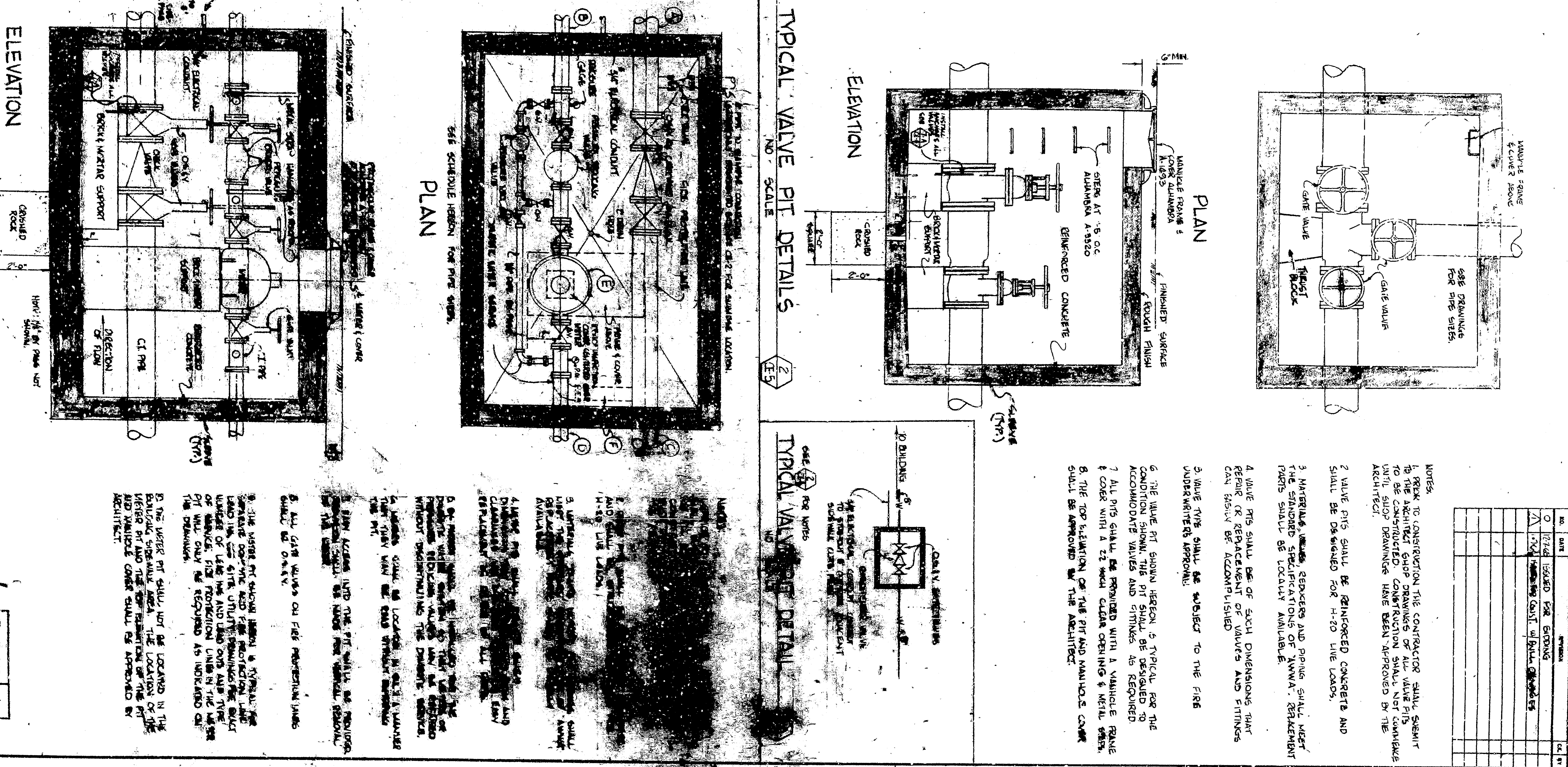


SANITARY SEWER LIFT STATION  
NO SCALE



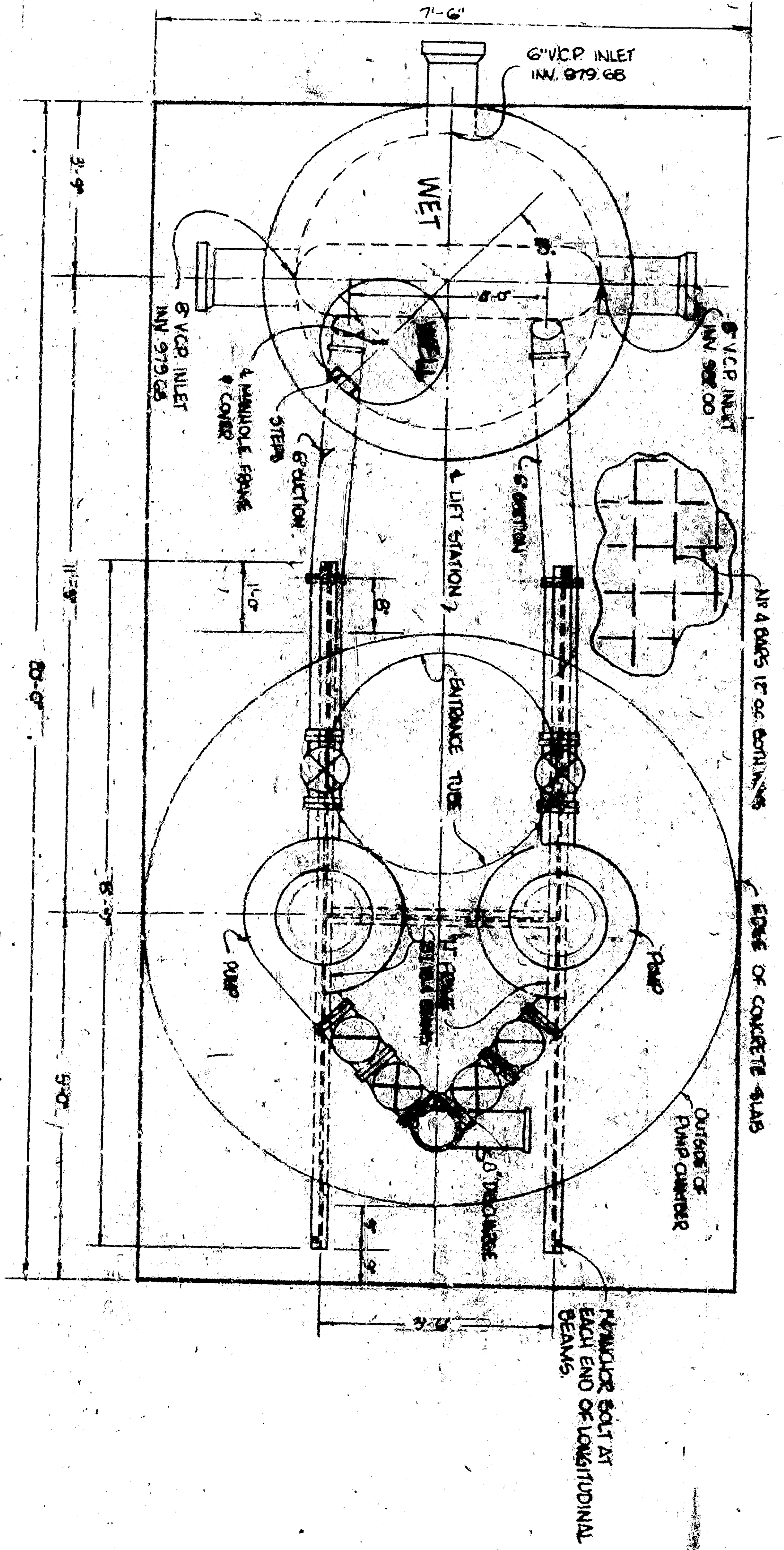
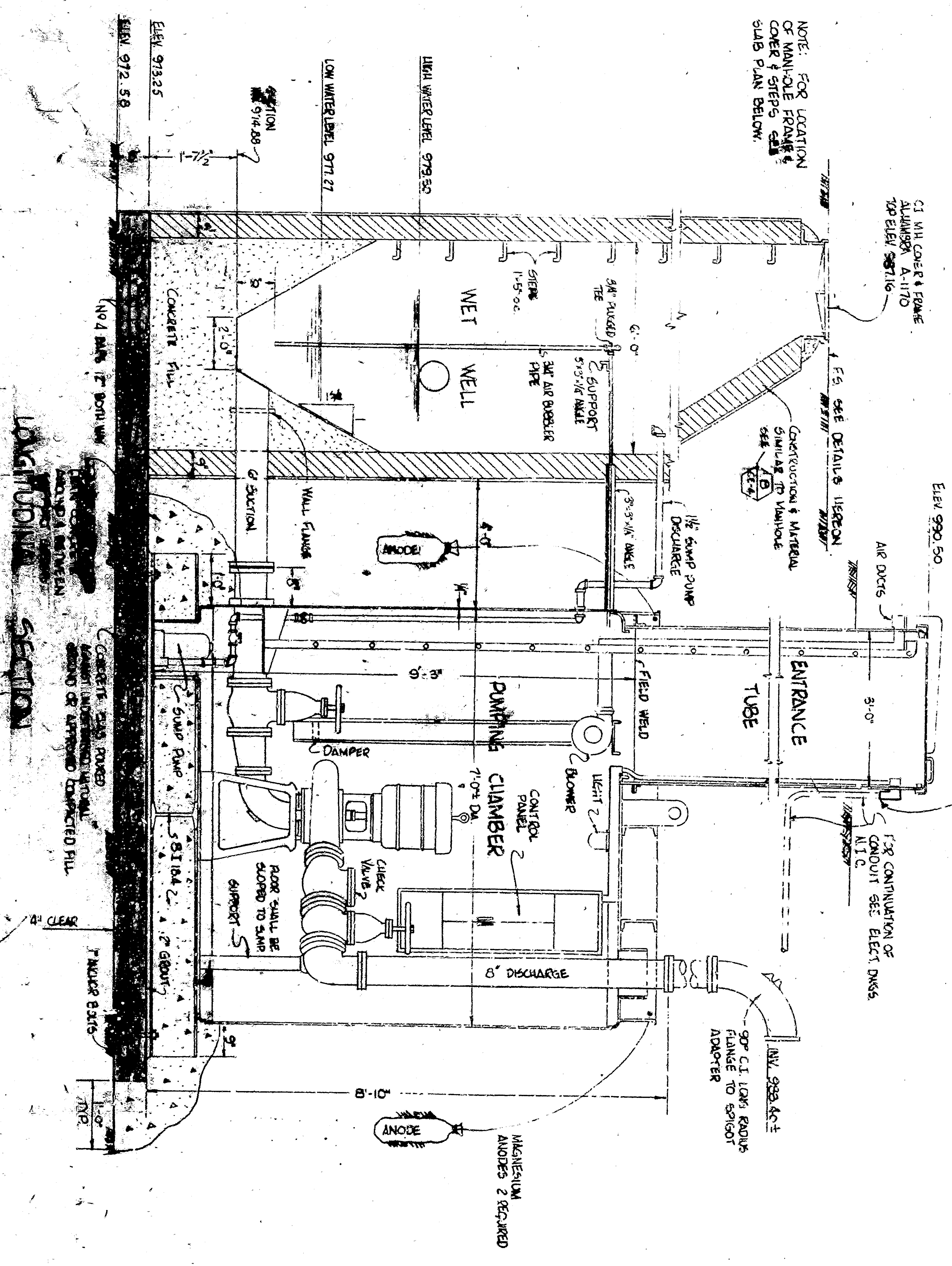
**SIZING SCHEDULE**

SIZE	1	2	3	4	5	6	7	8	9	10	11	12	13	14	15
1	1	1	1	1	1	1	1	1	1	1	1	1	1	1	1
2	1	1	1	1	1	1	1	1	1	1	1	1	1	1	1
3	1	1	1	1	1	1	1	1	1	1	1	1	1	1	1
4	1	1	1	1	1	1	1	1	1	1	1	1	1	1	1
5	1	1	1	1	1	1	1	1	1	1	1	1	1	1	1
6	1	1	1	1	1	1	1	1	1	1	1	1	1	1	1
7	1	1	1	1	1	1	1	1	1	1	1	1	1	1	1
8	1	1	1	1	1	1	1	1	1	1	1	1	1	1	1
9	1	1	1	1	1	1	1	1	1	1	1	1	1	1	1
10	1	1	1	1	1	1	1	1	1	1	1	1	1	1	1
11	1	1	1	1	1	1	1	1	1	1	1	1	1	1	1
12	1	1	1	1	1	1	1	1	1	1	1	1	1	1	1
13	1	1	1	1	1	1	1	1	1	1	1	1	1	1	1
14	1	1	1	1	1	1	1	1	1	1	1	1	1	1	1
15	1	1	1	1	1	1	1	1	1	1	1	1	1	1	1

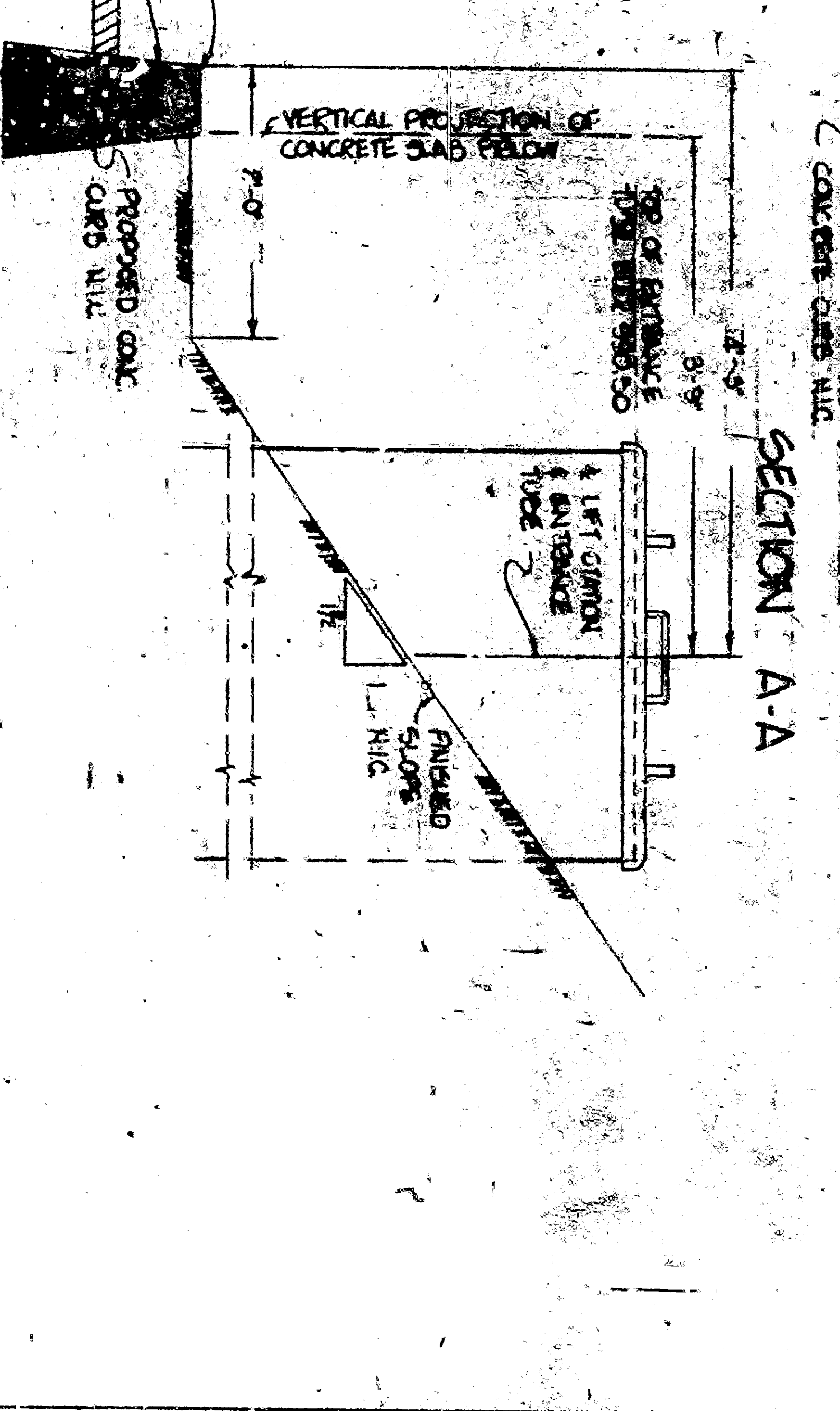
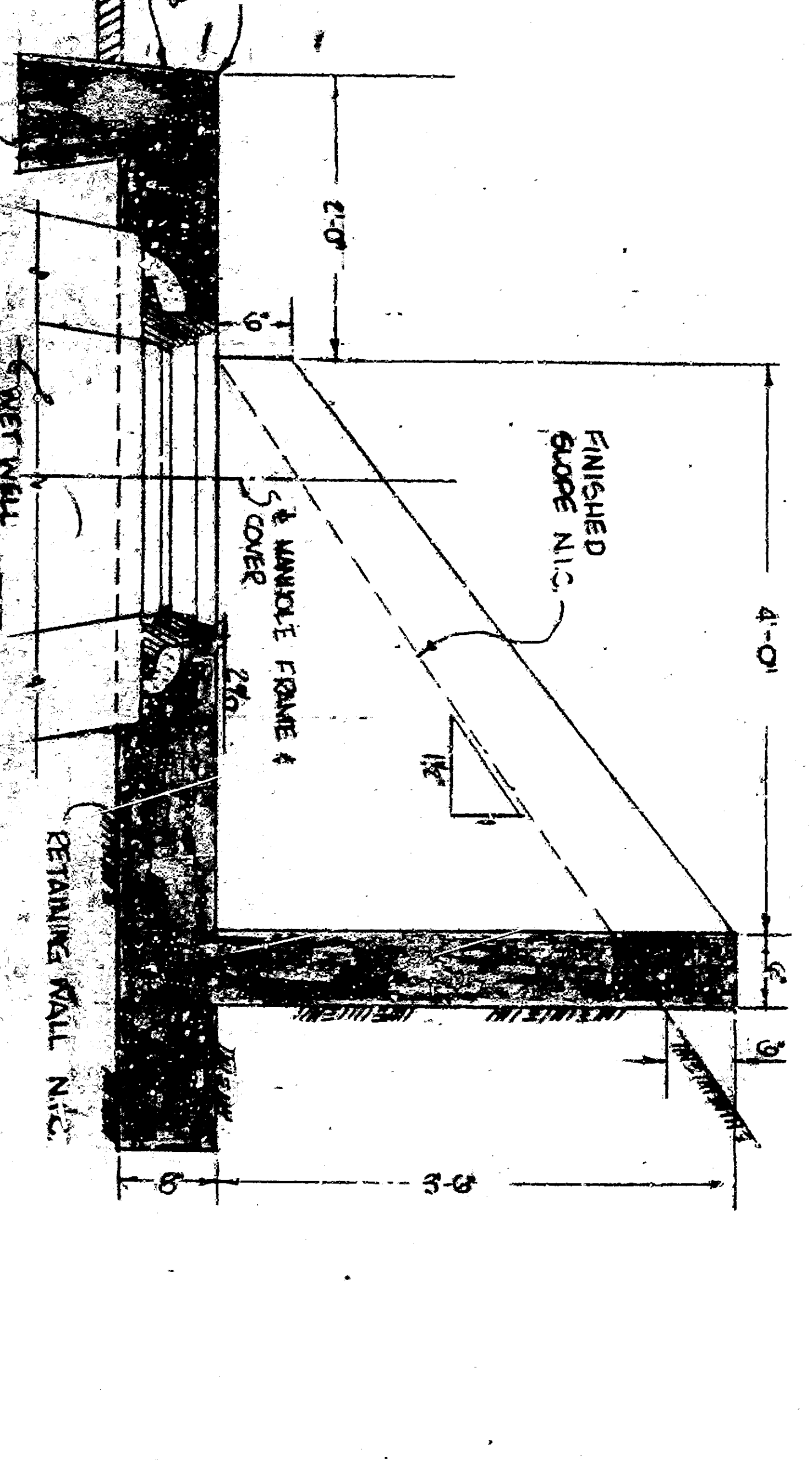
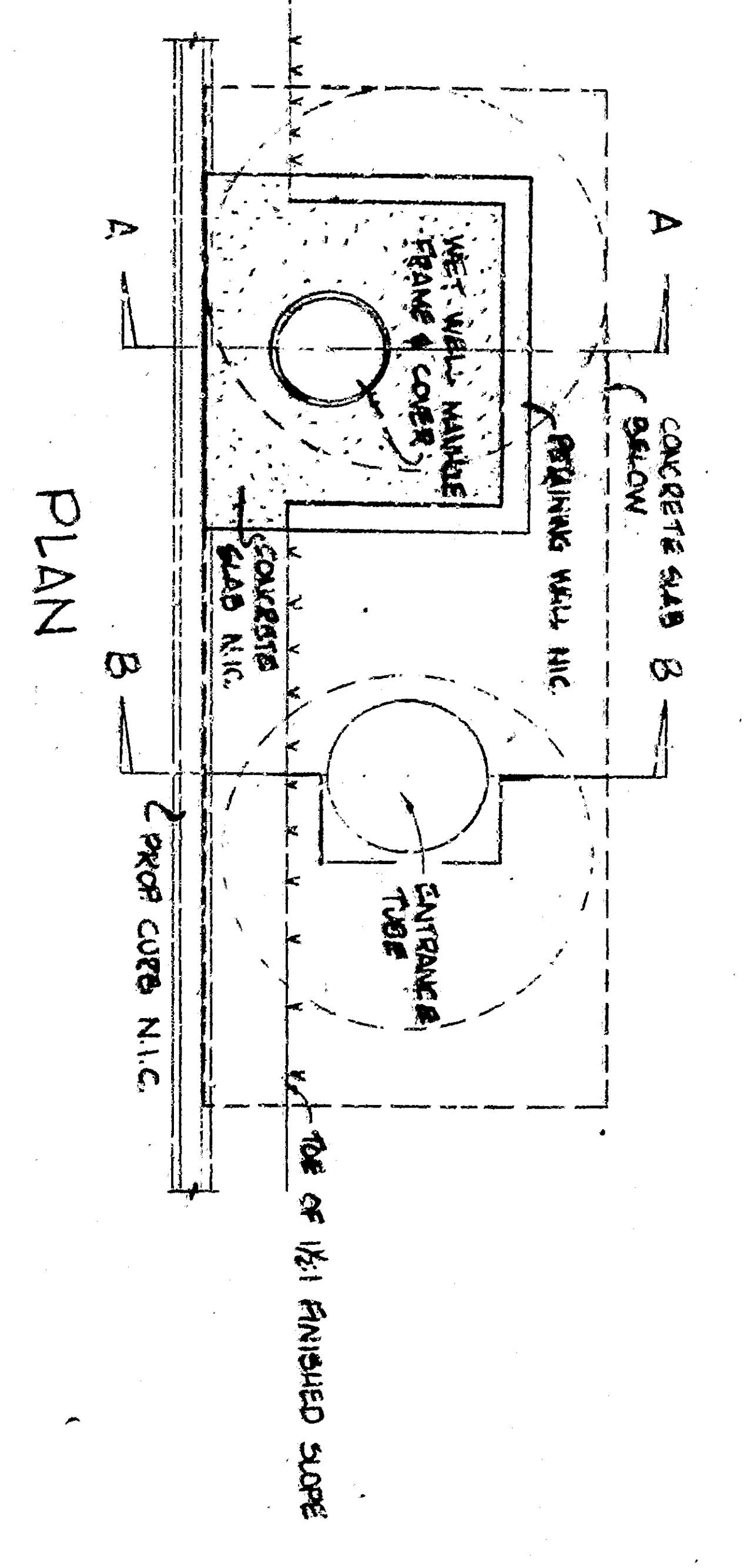




NOTE: ALL THE 2" DIA. TUBES IN LIFT STATION SHALL BE CONCRETE OR METAL. CONSTRUCTION MATERIAL SHALL BE CONFORM TO THE SPECIFICATION IN SECTION 22.00.00. ALL THE 2" DIA. TUBES IN LIFT STATION SHALL BE CONCRETE OR METAL. CONSTRUCTION MATERIAL SHALL BE CONFORM TO THE SPECIFICATION IN SECTION 22.00.00.



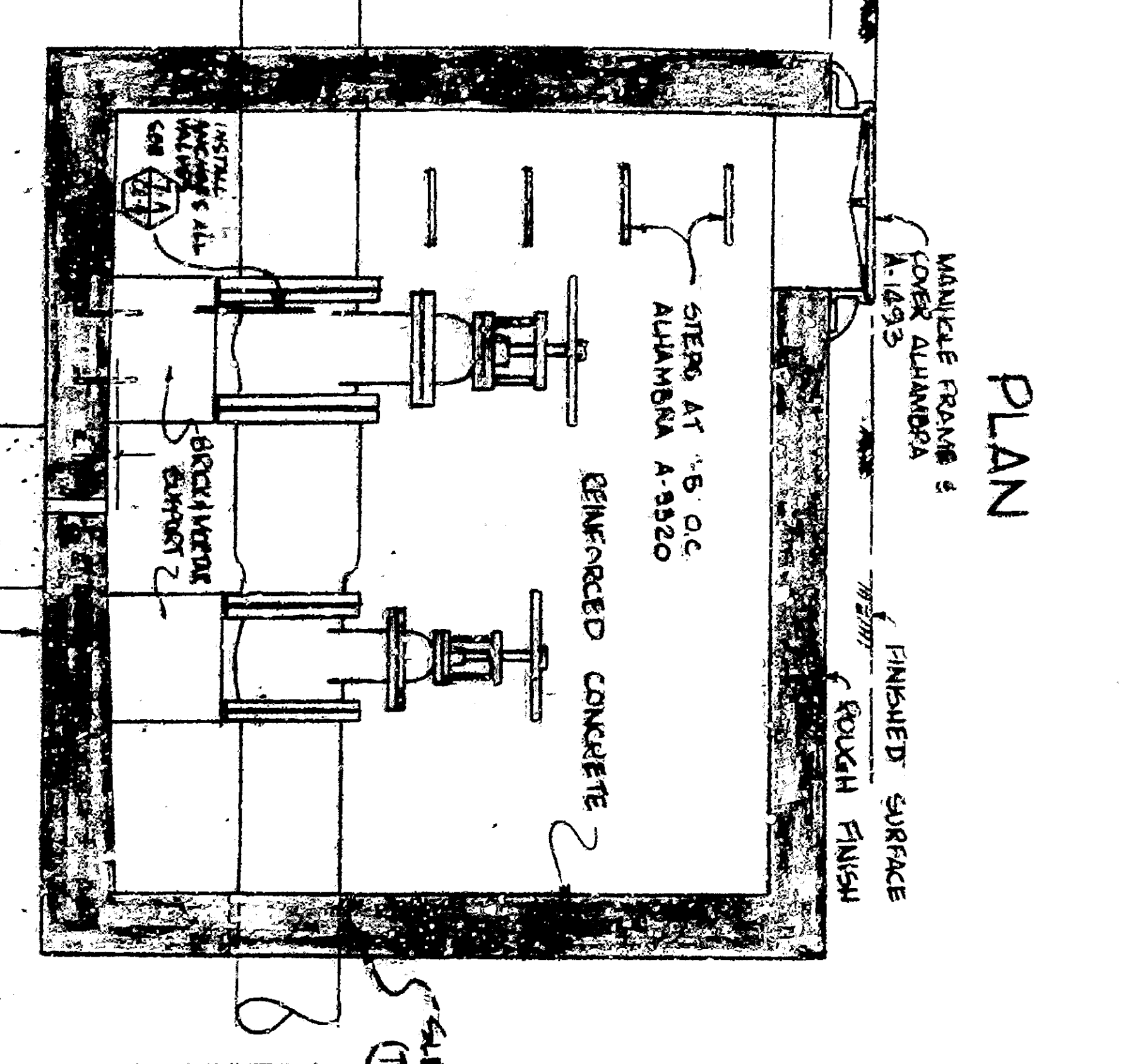
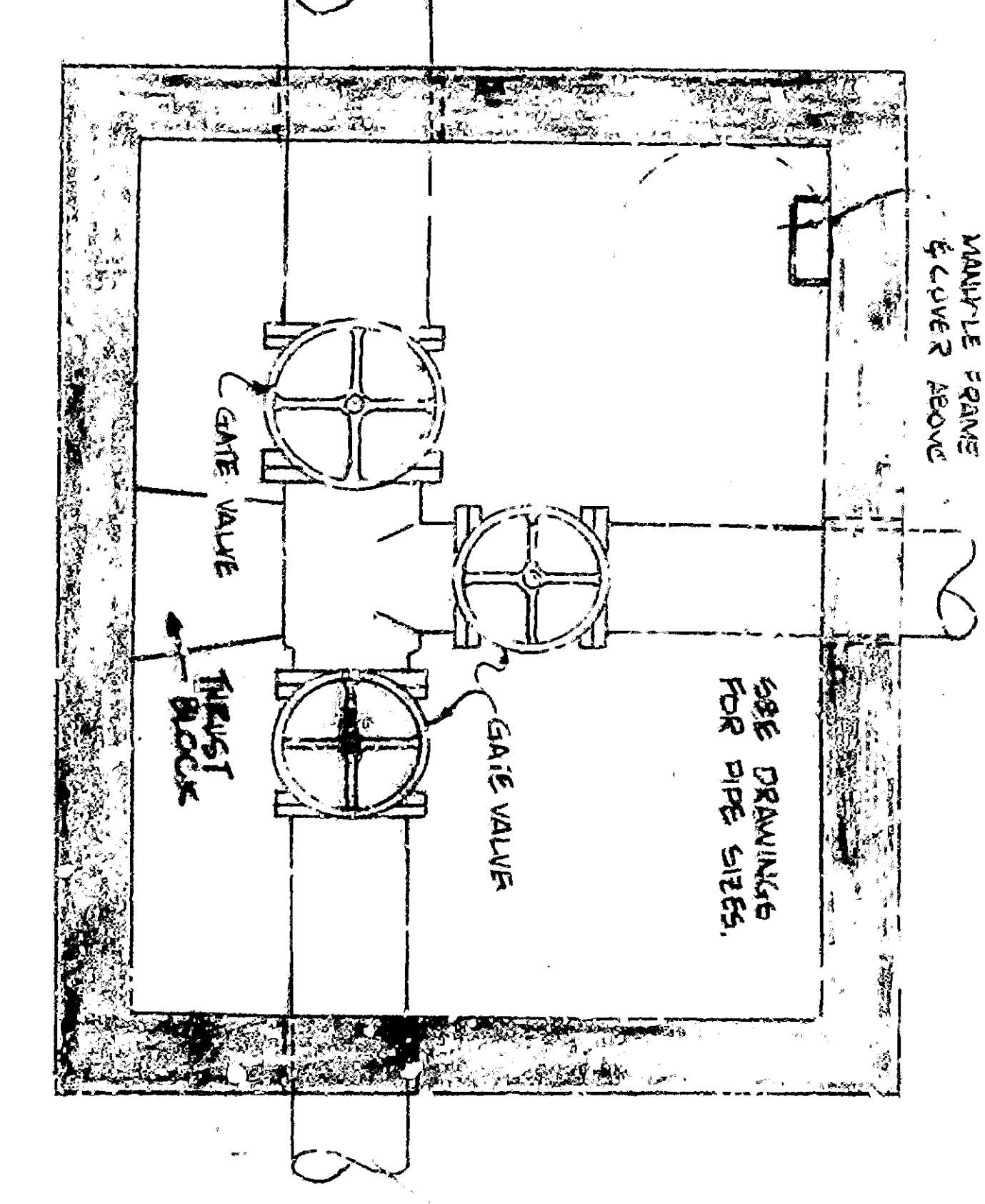
SANITARY SEWER LIFT STATION  
NO SCALE



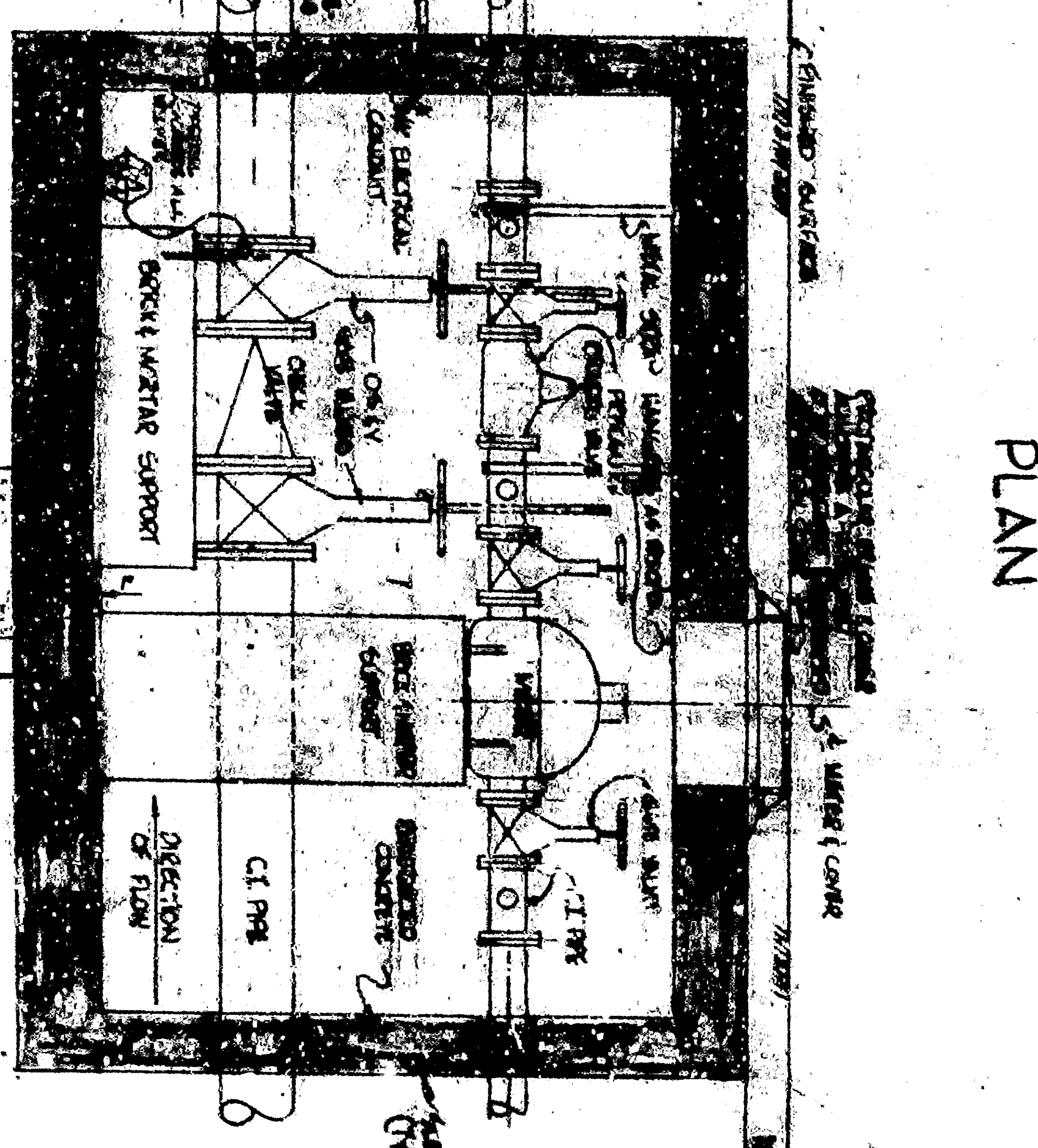
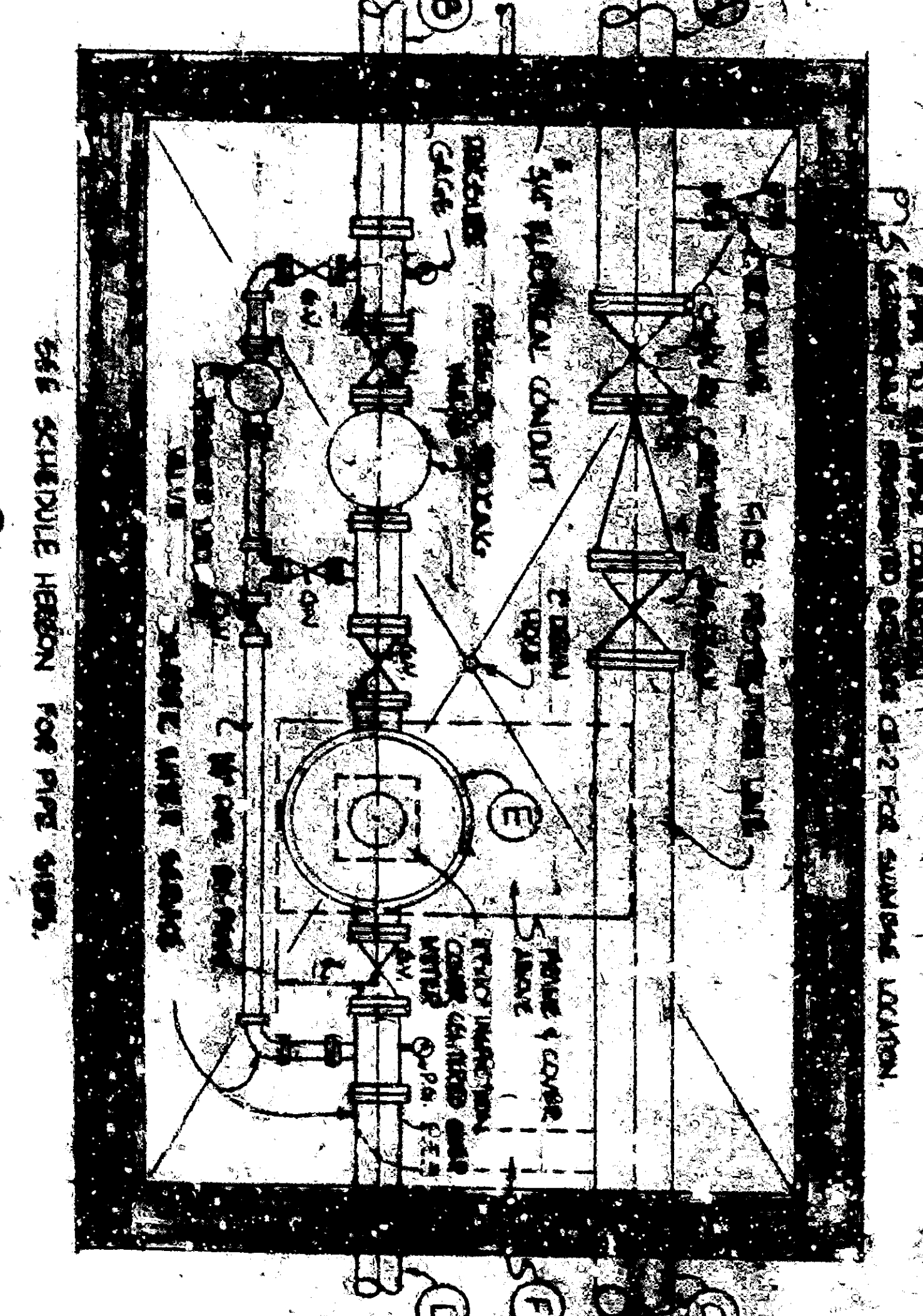
**SIZING SCHEDULE**

STATION NO.	INLET DIA.	OUTLET DIA.	WET WELL DIA.	PUMPING CHAMBER DIA.	DISCHARGE DIA.
1	18"	18"	36"	48"	18"
2	18"	18"	36"	48"	18"
3	18"	18"	36"	48"	18"
4	18"	18"	36"	48"	18"
5	18"	18"	36"	48"	18"
6	18"	18"	36"	48"	18"
7	18"	18"	36"	48"	18"
8	18"	18"	36"	48"	18"
9	18"	18"	36"	48"	18"
10	18"	18"	36"	48"	18"
11	18"	18"	36"	48"	18"
12	18"	18"	36"	48"	18"
13	18"	18"	36"	48"	18"
14	18"	18"	36"	48"	18"
15	18"	18"	36"	48"	18"
16	18"	18"	36"	48"	18"
17	18"	18"	36"	48"	18"
18	18"	18"	36"	48"	18"
19	18"	18"	36"	48"	18"
20	18"	18"	36"	48"	18"

\* ALL ELECTRICAL CONTROL SHALL BE INSTALLED ONLY IN RIBS  
\* ALL ELECTRICAL CONTROL SHALL BE INSTALLED ONLY IN RIBS



TYPICAL VALVE PIT DETAILS  
NO SCALE



TYPICAL METER PIT DETAIL  
NO SCALE

NOTES:  
1. ALL THE 2" DIA. TUBES IN LIFT STATION SHALL BE CONCRETE OR METAL. CONSTRUCTION MATERIAL SHALL BE CONFORM TO THE SPECIFICATION IN SECTION 22.00.00.  
2. ALL THE 2" DIA. TUBES IN LIFT STATION SHALL BE CONCRETE OR METAL. CONSTRUCTION MATERIAL SHALL BE CONFORM TO THE SPECIFICATION IN SECTION 22.00.00.  
3. ALL THE 2" DIA. TUBES IN LIFT STATION SHALL BE CONCRETE OR METAL. CONSTRUCTION MATERIAL SHALL BE CONFORM TO THE SPECIFICATION IN SECTION 22.00.00.  
4. ALL THE 2" DIA. TUBES IN LIFT STATION SHALL BE CONCRETE OR METAL. CONSTRUCTION MATERIAL SHALL BE CONFORM TO THE SPECIFICATION IN SECTION 22.00.00.  
5. ALL THE 2" DIA. TUBES IN LIFT STATION SHALL BE CONCRETE OR METAL. CONSTRUCTION MATERIAL SHALL BE CONFORM TO THE SPECIFICATION IN SECTION 22.00.00.  
6. ALL THE 2" DIA. TUBES IN LIFT STATION SHALL BE CONCRETE OR METAL. CONSTRUCTION MATERIAL SHALL BE CONFORM TO THE SPECIFICATION IN SECTION 22.00.00.  
7. ALL THE 2" DIA. TUBES IN LIFT STATION SHALL BE CONCRETE OR METAL. CONSTRUCTION MATERIAL SHALL BE CONFORM TO THE SPECIFICATION IN SECTION 22.00.00.  
8. ALL THE 2" DIA. TUBES IN LIFT STATION SHALL BE CONCRETE OR METAL. CONSTRUCTION MATERIAL SHALL BE CONFORM TO THE SPECIFICATION IN SECTION 22.00.00.  
9. ALL THE 2" DIA. TUBES IN LIFT STATION SHALL BE CONCRETE OR METAL. CONSTRUCTION MATERIAL SHALL BE CONFORM TO THE SPECIFICATION IN SECTION 22.00.00.  
10. ALL THE 2" DIA. TUBES IN LIFT STATION SHALL BE CONCRETE OR METAL. CONSTRUCTION MATERIAL SHALL BE CONFORM TO THE SPECIFICATION IN SECTION 22.00.00.

1 SUPP

**HERBERT CENTER**

SANITARY SEWER LIFT STATION AND  
METRANOUR DETAILS

4177 CE-5